

January 26, 2020



ВЫХОД ЕСТЬ!

КОНКУРС ПО РЕШЕНИЮ ГОЛОВОЛОМОК

League 2

- | | |
|-----------------------------|-------|
| 1. Going to Winnie the Pooh | 10 |
| 2. Simple loop | 2+2+4 |
| 3. Grasshopper | 2+4+4 |
| 4. Touching points | 2+5+6 |
| 5. One cell | |
| 6. Passage | 5+9 |
| 7. Double block | |

Participant

First Name, Family Name

School

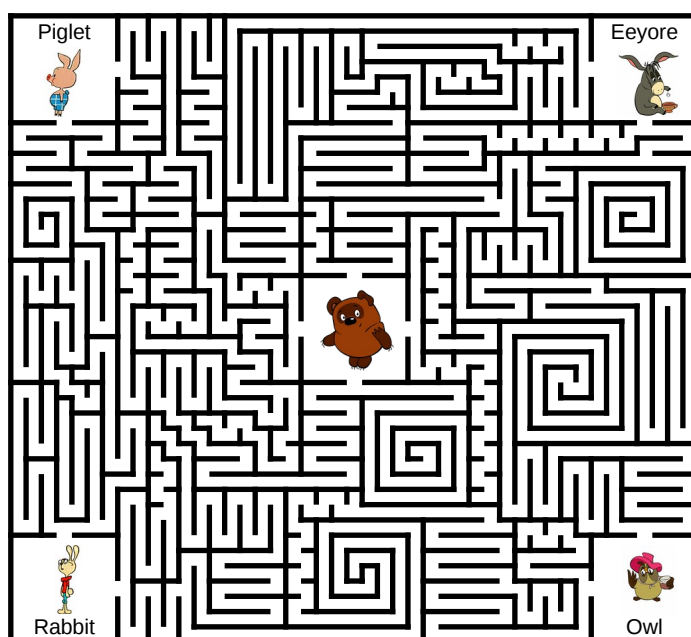
Class

--	--	--

1. Going to Winnie the Pooh

Score – 10 points

Which characters can reach Winnie the Pooh following the maze?

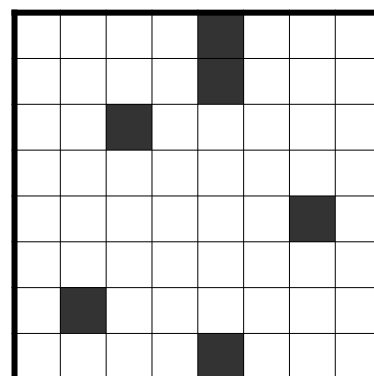
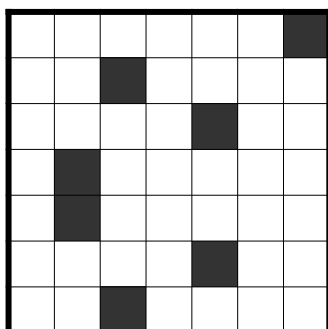
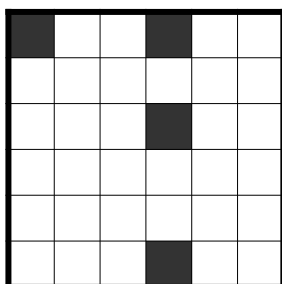


Write here the name of the characters who can reach Winnie the Pooh:

2. Simple loop

Score – 2 + 2 + 4 points

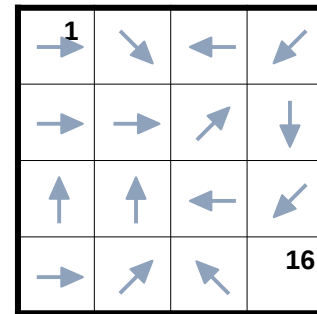
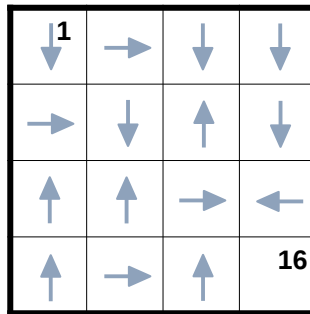
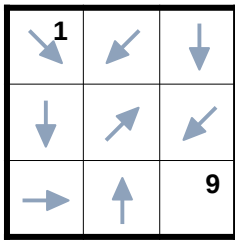
Draw a single closed loop which passes through all white cells exactly once. You can go vertically or horizontally from one cell to another, diagonal moves are not allowed.



3. Grasshopper

Score – 2 + 4 + 4 points

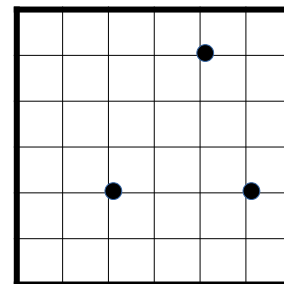
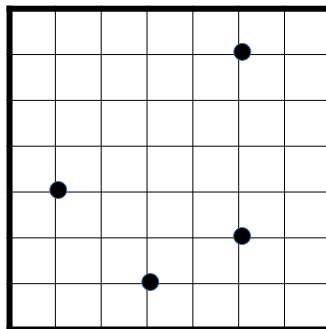
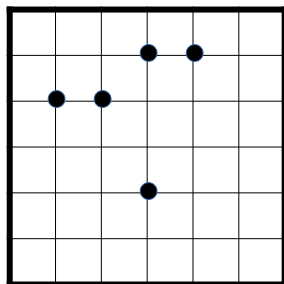
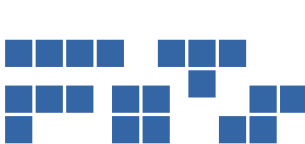
Starting from the top left corner the grasshopper has to visit all cells exactly once and finish at the bottom right cell. From any cell the grasshopper can jump to any distance in the direction showed by the arrow.



4. Touching points

Score – 2 + 5 + 6 points

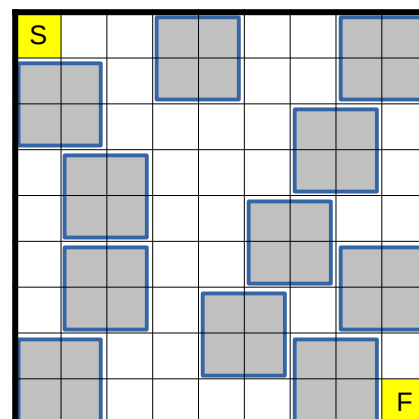
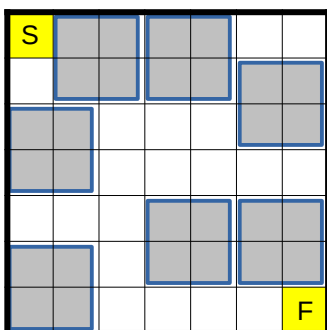
Place all the given shapes into the grid. The shapes cannot overlap and have common segments of the edges. Touching by the corner is allowed. All points where two shapes touch each other are shown. The shapes can be rotated and mirrored.



5. One cell

Score – number of visited squares

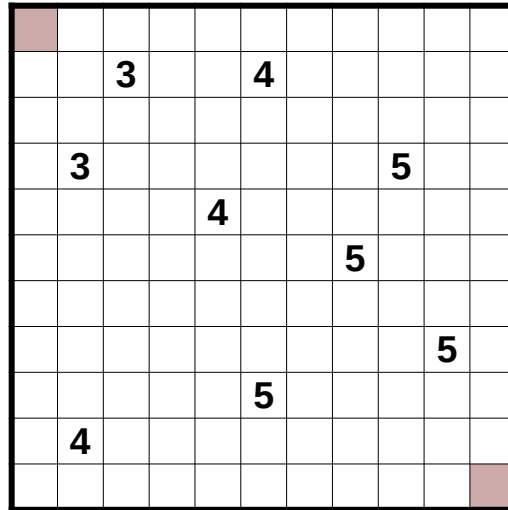
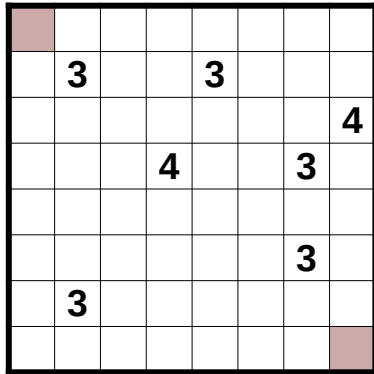
Draw a path from top the left to the bottom right corner. The path can go from one cell to another horizontally or vertically. Path can't visit any cell more than one time. Only one cell of any gray square can be visited. Try to visit as many gray square as possible.



6. Passage

Score – 5 + 9 points

Draw a passage of one cell width which goes from the top left to the bottom right corner. The passage consists of horizontal and vertical segments and passes through all cells with digits. The passage can't turn in the cell with digit and the digit show the length of the corresponding segment. Passage cannot touch itself even by a single point.



7. Double block

Score – number at the question mark multiplied by 2

Fill in some cells with digits from 1 to 4. Each row and column should contain every digit exactly once. No more than one digit per cell. Two cells in each row remain empty. Numbers outside the grid show the sum of digits between empty cells in the corresponding direction. Try to get the number at the place of the question mark as big as possible.

